

# Table of Contents

1. Principles and Regulations
  - 1.1. Mission
  - 1.2. Rules and Regulations
    - General Regulations*
  - 1.3. General Guidance for Duties
    - 1.3.1. Division of Labor
    - 1.3.2. Onboard Security
    - 1.3.3. Sorties
    - 1.3.4. Training
2. Organization and Structure
  - 2.1. Command Structure of the Brigade
    - Support Battalions*
  - 2.2. Command Structure of the Battalion
    - Command Staff, Duties of the Staff Officers*
  - 2.3. Company Organization and Duties
3. Combat Units
  - 3.1. The Fireteam
    - 3.1.1. The Armsmen
      - Individual Standards, Wargear*
    - 3.1.2. The Team
      - Camaraderie, Mission Specific Wargear*
4. Auxiliaries
  - 4.1. Transport
  - 4.2. Sentinels
  - 4.3. Armor
  - 4.4. Engineers
5. Policing the Golarion's Doom
6. Armsmen Common Tasks and Skills
  - 6.1. Terrain
  - 6.2. Marksmanship
  - 6.3. Equipment
  - 6.4. Operations
  - 6.5. Healthcare
  - 6.6. Close Combat

# Principles and Regulations

## Mission

The Purpose of the Naval Armsmen Security Corps is the physical security of the personnel of the Golarian's Doom. This purpose is divided into two distinct, but equally important general duties: Onboard Securities and Sorties. Both duties require constant vigilance. Both duties carry dire consequences for failure.

## Onboard Security

The Naval Armsmen Security Corps provide safe and secure custody for all personnel aboard the Golarian's Doom and perform all duties in a manner that is responsive to the needs of our diverse community. Naturally, what our communities are most in need of are discipline and reliable justice. The NASC ensures that retribution for criminals is swift, unwavering, and inescapable. NASC members, having a great deal of interaction with lower ward personnel, are uniquely positioned to understand their material needs and report findings to appropriate departments. This face of the mission is paramount as failure can lead to violent insurrection and mutiny.

## Sorties

The NASC mission to provide safety to all personnel does not end at the hull of the Golarian's Doom. Whenever logistics personnel leave the security of the ship, NASC Armsmen are expected to accompany them to ensure their safe and dutiful conduct. This mission grows complicated in environments that the NASC cannot control. This is further complicated when escorting the executive staff of the Golarian's Doom, as the NASC has no jurisdiction over them and the missions they lead can be incredibly unpredictable.

## General Regulations

These laws are to be followed and enforced at all times by all nonexecutive personnel. Ignorance or lack of understanding is not an excuse for deviance. Punishments may only be modified or waived by executive staff.

### **WILLFUL DISRESPECT OF AN OFFICER OR EXECUTIVE**

Any personnel who behaves with disrespect – in word or action- to any officer or executive will be Executed.

### **FAILURE TO ACKNOWLEDGE A SUPERIOR**

Any personnel who fails to properly greet a passing officer or Executive will be publicly Flogged Until Contrite.

### **THEFT, ROBBERY, OR LARCENY**

Any Person who acquires the property of another without consent by means of stealth shall be publicly Flogged Until Contrite. Any personnel who does the same by means violence or threat of violence will be Executed.

### **ILL-TREATMENT OR NEGLECT OF ENTRUSTED ITEMS**

Any personnel who ill-treats issued items or equipment through willful or non-willful neglect will be Flogged Until Contrite.

### **WITCHCRAFT OR CONSORTING WITH DEMONS**

Any personnel found performing unnatural acts and rituals, communicating with unnatural forces, or plotting activities to precipitate either of the above will be Executed on sight.

### **INTOXICATION DURING ASSIGNED DUTY HOURS**

Any personnel found under the influence of mind-altering substances during their assigned duty hours will be publicly Flogged Until Contrite.

### **WILLFUL DISOBEDIENCE OF A SUPERIOR**

Any personnel who willfully disobeys the direct orders of a superior will be Executed.

### **FAILURE TO PERFORM DUTIES**

Any personnel who fails to carry out their duties will be publicly Flogged Until Contrite unless extenuating circumstances can be proven.

### **FRAUD, EMBEZZLEMENT, OR EXTORTION**

Any personnel who uses a position entrusted with authority to defraud naval departments of assets and resources; uses resources for their own profit or pleasure; or compels others to provide profit or pleasure, will be Flogged Until Contrite, and then Executed.

### **INCITEMENT OR PARTICIPATION IN MUTINY**

Any personnel who instigates, excites, causes, joins, or conspires and mutinous or seditious activity will be public Flogged Until Contrite, and then Executed.

### **RAPE**

Any personnel who provably acquires sexual services through violence, threats, or abuse of a position entrusted with authority will be publicly Flogged Until Contrite, and then Executed.

### **FAILURE TO REPORT ANY CRIME**

Any personnel found to have knowledge of any crimes described above who declines to inform the NASC will be considered party to the crime.

# General Guidance for Duties

As the general duties of the Naval Armsmen Security Corps are divided, so too must be its personnel. Otherwise, the vast reaches of the Golarian's Doom would never see justice and personnel operating outside the ship would have no expectation of safety. The approved method for division of duties for a fully staffed Company is shown below and expanded upon in Appendix 1-3 Form CA03-05 Duty Assignment Worksheet.

<b>1st Company Duty Roster</b>						
Shift	Sorties/Training		Onboard Security		No-Duty	
	Sergeant	Armsmen	Sergeant	Armsmen	Sergeant	Armsmen
0000-1000	1	12	1	12	1	5
0800-1800	2	12	2	12	1	5
1600-2000	1	11	1	11	1	4

1st Company Sergeants and Armsmen divide their personnel in order to meet their twin responsibilities: Onboard Security and Sorties and Sortie Mission Readiness. As there is never a lapse in ship operations, training and security duties are split across three shifts to cover every hour of the day cycle. Lieutenants will draft duty rosters to satisfy the following prerogatives:

- Sergeants and Armsmen will alternate Sortie/Training days and Onboard Security days.
- On Training days, Armsmen will alternate days as Cadre or undergoing training.
- One Sergeant and three Armsmen will serve as the Logistics Team. Effort will be made to cycle personnel.
- All Sergeants and Armsmen will have a No-Duty day once every six-day cycle.
- In the event of a Sortie, personnel will be diverted from Training.

## Onboard Security Guidance

While patrolling the wards of the Golarian's Doom, Armsmen must bear in mind the essence of their mission: interface with all communities throughout the wards to ferret out violations of the General Regulations and Edicts published by the executive staff. This is done through two main efforts: Presence Patrols and Community Outreach.

### Presence Patrols

This form of Onboard Security consists of walking the corridors and byways of the Golarian's Doom. While walking, Armsmen are to remain vigilant and perceptive. They are to constantly be searching for evidence of sedition, malingering, and malfeasance. Violators may be subtle, requiring shrewd scrutiny by the Armsmen. Violators may be aggressive, requiring bravery and discipline by Armsmen. Frequently, malcontents will exhibit both qualities in turn, requiring proficiency, astuteness, and courageousness from patrolling Armsmen on every shift. Presence patrols reinforce the perception that the NASC is ever-present and justice reaches all corners of the ship.

### Community Outreach

This form of Onboard Security consists of establishing a secure, controlled location within the lower wards to attract informants, encourage faithfulness in personnel, and investigate unmet material needs within lower ward communities. By providing low-cost services which may be lacking in lower ward communities -such as healthcare or housing advocacy- the NASC reminds personnel of the benevolence of executive staff and discourages sympathy with seditious agitators.

### Personnel-Facing Disposition

When interacting with the general population of the personnel of the Golarian's Doom, it is crucial for the Armsmen to comport themselves appropriately to affect the desired impression. The Armsmen must be firm, stern, unyielding and uncompromising. Simultaneously, the Armsmen must be attentive and understanding, as to encourage confidence and faith in personnel. Otherwise, personnel may conceal problems or allow them to fester.

# General Guidance for Duties

## What to Look For

When interacting with personnel of the Golarian's Doom, regardless of circumstances or activities, Armsmen shall remain vigilant for signs of sedition, malfeasance, and witchcraft. Are personnel suspicious, furtive, or anxious when speaking? Do they avoid the attention of Armsmen? Do they conceal parts of their person? Are they willing to lead you to their domicile? Do they attempt to conceal records or inventory? In addition, Armsmen shall remain attentive to conditions that indirectly foment discontent: lack of access to food and housing, excessively abusive management, or unsanitary conditions. These will be reported to appropriate authorities.

## Detaining Violators of the General Regulations and Edicts

If Armsmen encounter obvious violation of General Regulations or Edicts, they will immediately detain the person of interest and begin gathering evidence. This evidence is submitted to the Lieutenant on duty who will evaluate the evidence against the charge and either confirm, deny, or elevate the charge to a higher authority. The notable exception to this process is Witchcraft, whose sentence of execution is carried out immediately.

## Sortie/Training Guidance

The other facet of the NASC mission is Sorties, or protection of Golarian's Doom personnel outside of the confines of the ship's hull. Sorties can vary from supervision of logistics personnel in potentially hostile environments to escorting the Master-At-Arms himself during a running gunfight through a xeno-infested city. Sorties are incredibly unpredictable by their very nature. Therefore, the NASC prepares its Armsmen to face any situation with confidence and expertise. Training is of such importance that each Armsmen should expect to spend half of their on-duty time preparing for a Sortie. Examples of expected sortie types listed in the table below.

## Schedule

In accordance with Onboard Security's shift division, Training is split into three identical shifts. This allows Armsmen to cycle between Onboard Security duties and Training duties without frequent, dramatic shifts in schedule. Finally, the shift division allows NASC to make the most of their training facilities by having them active and productive at all times. Below is the approved template for a single training shift.

Shift Training Schedule Template		
0000-0030	Prep	Learning materials organized by Cadre. Curricula reviewed.
0030-0100	Esprit De Corps	Drill and ceremony, recitations and performances to inculcate a sense of pride, fellowship, and common loyalty to the Naval Armsmen Security Corps and Lord-Captain Caleb Pilates.
0100-0500	Block A Training Modules	Cadre divides trainees into three equal groups. The three groups train at the three stations, cycling stations every eighty minutes. The stations are as follows: Terrain, Marksmanship, and Operational Skills.
0500-0530	Lunch	All training groups assemble for rations and classroom instruction.
0530-0930	Block B Training Modules	Training groups return to active instruction in the three-station format. Training groups once again cycle stations every eighty minutes. The stations for this block are as follows: Close Combat, Equipment, and Healthcare.
0930-1000	Cleaning and Maint	Training areas cleared of debris and sanitized. Training materials reset to their original position for the next shift. Damaged equipment identified and repaired.

# General Guidance for Duties

## Cadre

Each training station requires one or more Sergeant to organize and operate. During the Prep phase of each training shift, the Sergeants from across the Brigade will organize and distribute themselves to act as Cadre, operational staff who operate and lead training stations. These Cadres must be proficient in the topic they will be teaching and will review the training material during the Prep phase to re-familiarize themselves with the finer details and nuances of the topic.

## Training Stations

A full list of the training topics is included in Chapter 5 Armsmen Common Tasks and Skills. Shown below is a small summary of the themes of the stations.

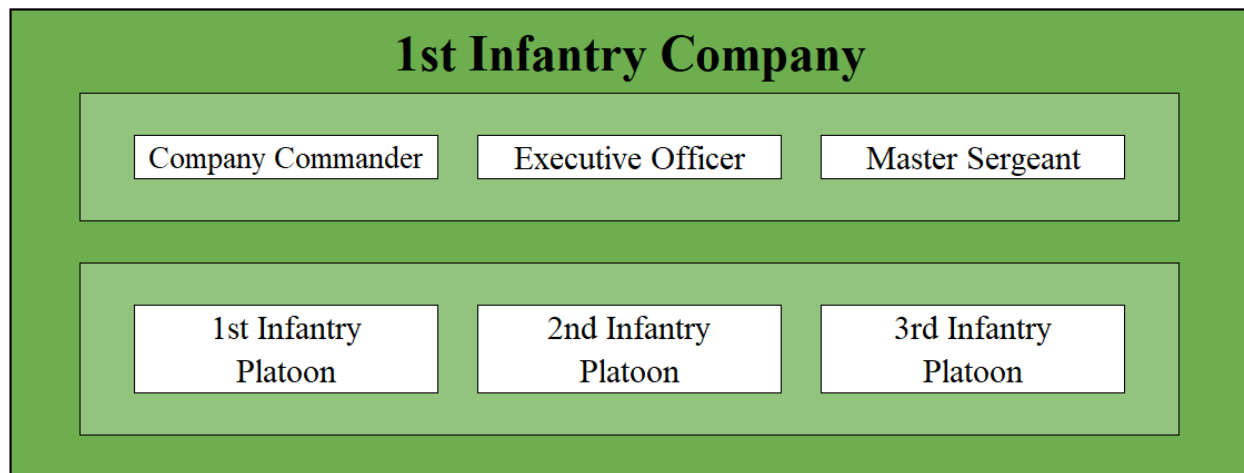
Subject	Description
Terrain	Negotiating physical obstacles and directly interacting with the environment.
Marksmanship	Operation of issued small arms under ideal and nonideal conditions.
Equipment	Operation of mission specific items of some complexity.
Operations	Skills for use in various circumstances to enhance utility and survivability.
Healthcare	Basic anatomy and physiology as well as techniques to remedy dysfunction in body systems.
Close Combat	Hand to hand combat techniques with emphasis on restraint and submission.

## Special Events

In order to foster enthusiasm, camaraderie, and proficiency, the NASC holds special training events on a regular basis. Regular training is suspended for the duration as all training shift personnel attend the special event instead. The Force on Force and Dodgeball events are made safe through the use of beam attenuators, rendering the beam harmless to all but the most sensitive of tissues.

Special Events	Description
NASC Activities and Recreation	Strength and agility competition, both individual and team events.
Force on Force	Squad v Squad combat in the training arena. Tournament style with awards.
Movie Night	Projector footage of real combat for trainees to engage in the shooting range.
Dodgeball	Squad v Squad with no maneuver elements. Tournament style with awards.
Outpost Field Exercise	Trainees erect and operate an Outpost in the lower wards with fortifications.
Community Outreach	Trainees operate a medical station in the lower wards and care for personnel.
Condemned Man Casualty Care	Criminals set for Execution are mortally wounded. Armsmen provide care.

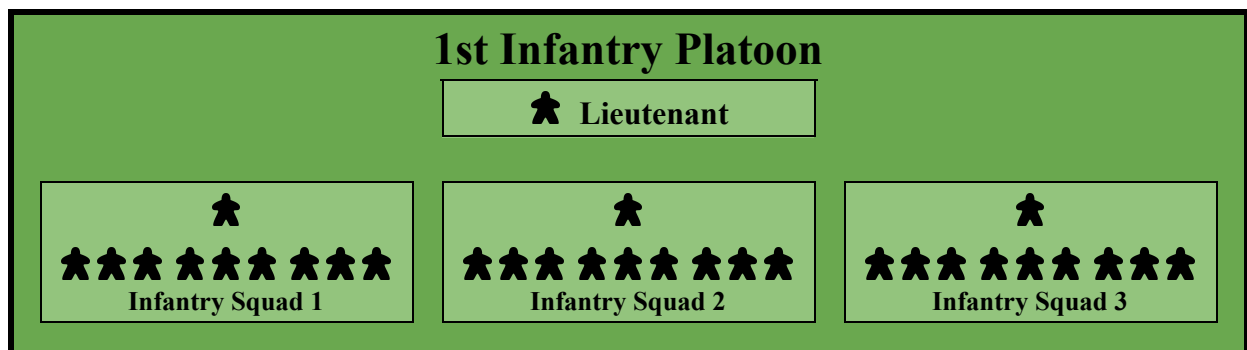
# NASC Company Organization



## Duties of Appointed Officers

The Commander of a Company is appointed by the Battalion Commander. Once commissioned, all duties inherent in his position fall upon his shoulders, from policing of assigned wards to mission readiness of every single Armsmen. To assist him in his duties, the Commander appoints four Lieutenants: three to lead his platoons and one to serve as his Executive Officer. The Executive Officer is responsible for enacting Company-wide directives from the Commander and coordinating with Battalion Command Staff. Each Lieutenant assumes responsibility for the mission readiness of all Armsmen under his command, as well as the management of their operations. In turn, the Lieutenants select a Sergeant from their Armsmen to provide close, personal supervision and leadership to the personnel of his platoon. Similarly, the Commander selects a Master Sergeant to mentor the Sergeants.

# NASC Platoon Organization

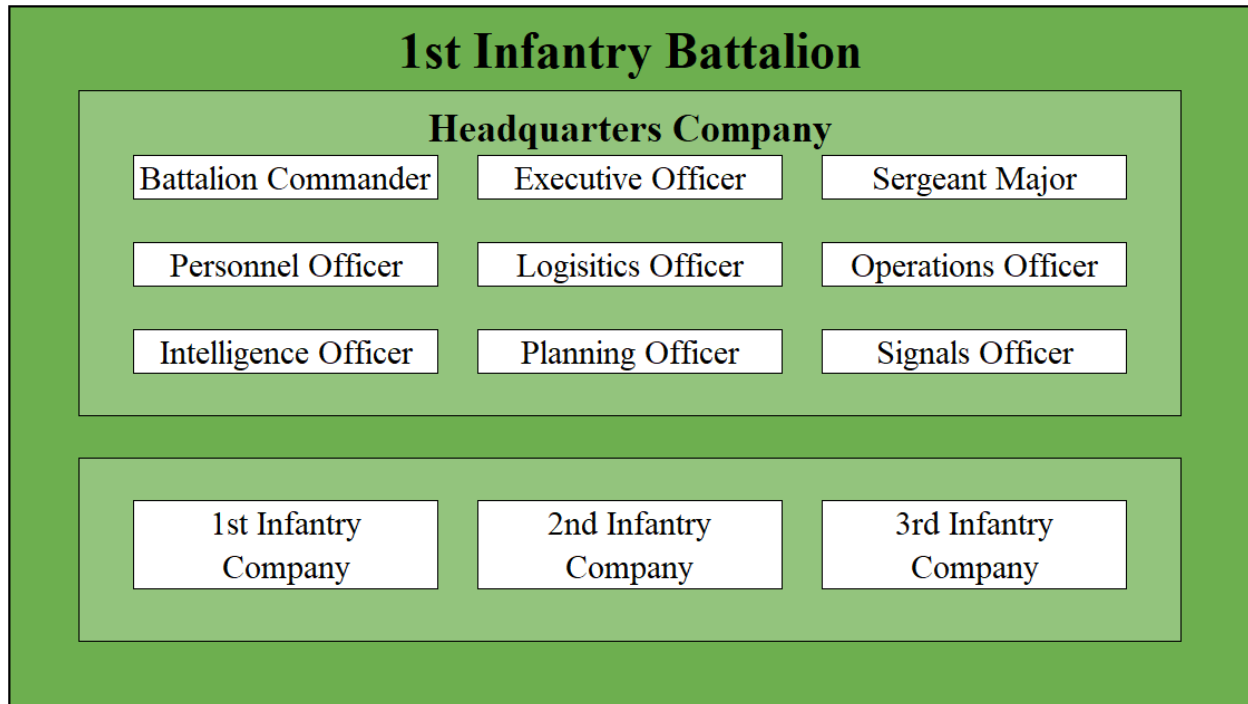


## Duties of Appointed Officers

Lieutenant

Sergeants

# NASC Battalion Organization



## Duties of Appointed Officers

### Battalion Commander

The Battalion Commander exercises authority and direction, to seize, retain, and exploit the initiative through Mission Orders. Mission Orders are directives that emphasize to subordinates the results to be attained, not how they are to achieve them. The Commander focuses the order on the purpose of the operation through Mission Orders. After the Battalion Commander has issued the Mission Order the task of considering relevant variables and forming one or more Deployment Concepts falls upon his Battalion Command Staff.

The Commander encourages disciplined initiative through a clear Commander's intent while providing enough direction to integrate and synchronize the Battalion at the decisive place and time. To this end, the Commander performs three primary tasks:

- Drive operations through the activities of understanding, describing, directing, and leading operations.
- Develop teams, both within the Battalion and with joint forces, within and without the Golarion's Doom.
- Provide a clear commander's intent and encourage disciplined initiative through Mission Orders.

### Battalion Executive Officer

The Battalion Executive Officer is the Commander's principal assistant and directs staff tasks, manages and oversees staff coordination, and special staff officers. The Battalion Commander normally delegates executive management authority to the Executive Officer. As the key staff integrator, the Executive Officer frees the Commander from routine details of staff operations and the management of the headquarters and ensures efficient and prompt staff actions. The Executive Officer exercises the duties and responsibilities of the second in command.

### Sergeant Major

The Sergeant Major carries out policies and enforces standards for the performance, training, and conduct of Armsmen. The Sergeant Major provides advice and initiates recommendations to the Commander and staff in matters pertaining to Armsmen. In operations, the Battalion Commander employs the Sergeant Major throughout the Battalion's area of operations to extend command influence, assess the morale of the force, and assist during critical events.

# NASC Battalion Organization

## Personnel

The Personnel Officer oversees bureaucratic administration and Armsmen readiness. This includes manpower, head count and accountability, training, and physical readiness. To perform this herculean task, the Personnel Officer has three squads at his disposal: one squad of administrators to perform bureaucratic tasks and two squads of medics to perform medical screening and treatment as well as train Armsmen in first-aid skills.

**Battalion Chirurgen** is the medical advisor to the Personnel Officer and the leader of the Medical Section, consisting of two squads of Armsmen with specialty training in Medicae. The Chirurgen is responsible for disseminating training in immediate, life-saving Medicae skills to Armsmen throughout the Battalion and establishing Medicae Aid Stations as needed to fulfill two further functions: advanced trauma treatment for more grievously injured Armsmen in preparation for transit to better equipped Golarion's Doom Infirmaries, and routine nursing for athletic injuries and commonplace illnesses. Though the Chirurgen is responsible for educating Armsmen in basic medical screening for referral to high levels of care, record keeping duties fall upon the staff of the Personnel Officer.

## Logistics

The Logistics Officer directs movement, supply, and maintenance of NASC assets. The aspects of this responsibility include acquisition, storage, and distribution of supplies; transport of personnel; acquisition or construction of facilities; and acquisition or furnishing of services. In addition to the physical control and distribution of supplies, Logistics analysts are expected to provide input on the development of Deployment Concepts, making recommendations on consumable load outs, supply trains, or resupply rendezvous. To assist in this mission, the Logistics Officer has three squads of Armsmen at his or her disposal to perform handling, escort, and analysis.

## Operations

The Operations Officer is concerned with the application of NASC assets to accomplish currently on-going missions. He or she analyzes mission parameters against available assets and scheduled missions to create a Deployment Concept that details personnel requirements, strategic equipment requirements, and timeline. The Deployment Concept is coordinated between all Battalion Staff to ensure the deployed Company will have adequate support to accomplish their mission.

## Intelligence

The Intelligence Officer directs the collection and analysis of information regarding operational areas in order to provide guidance and direction to assist Companies. This analysis includes material conditions such as local climate or presence of hostile denizens. Briefings are distributed to deploying units prior to the operation, as well as Intel Collection Requests for Armsmen to report back. Between missions, intelligence analysts busy themselves with crime pattern analysis in their Battalion's patrol area.

## Signals

The Signals Officer is concerned with facilitating the flow of information within the Battalion, including standards for communication, communications equipment procurement and maintenance, and communications training. This mission is critical to the success of the NASC, as it is the conduit for command and control from the leadership elements to their subordinate units. NASC forces must be networked, linked, and synchronized in time and purpose so dispersed forces can communicate, maneuver, share information, collaborate, and share a common operational picture. To assist in this mission, the Signals Officer has a squad of specialists at his disposal.

## Planning

The Planning Officer oversees coordination of Battalions within the Brigade such as on-going missions, established fields-of-fire, inter-Battalion missions, and NASC asset loaning. With three Brigades and all their subsidiary units performing non-stop operations, building and maintaining a comprehensive understanding of the moving parts of the totality of the NASC forces is a full time job. The Planning Officer documents and communicates the broad scope of his or her Brigade's activities to counterparts to prevent collisions, conflicts, and misunderstandings.

# NASC Brigade Organization

## 1st Infantry Brigade Combat Team



# NASC Brigade Organization

## Duties of Appointed Officers

The Brigade level has counterpart roles mirroring that of the Battalion level. As the purview of the position is much larger than the Battalion level, encompassing the entire Brigade, so to do the responsibilities. As such, the Brigade Staff Officers rely heavily on the Battalion Officers in order to achieve a comprehensive understanding of the NASC's existing conditions as well as feedback regarding issued directives. The Brigade Staff Officers worry less about the training and readiness of individual units and their constituent Armsmen and more about the ideal state of readiness of the Brigade and standards and policies that will facilitate that level of readiness.

## Support Battalions

### Transport

The Taurox is a sturdy and spacious truck that can carry a full squad or equivalent cargo by volume. It comes with a host of features, such as ceramite armor, void-sealing, and comms arrays. The Charon can carry 5 tons on improved surfaces or 3 tons cross-country. It also has an available trailer which doubles its capacity with the same features available. These vehicles are valued for their reliability and ease of repair.

The Chimera Armored Personnel Carrier is a versatile workhorse respected throughout the Imperium of Man. While as many variants exist as planets in the Imperium, the NASC utilizes the STC design. Armored, amphibious, void sealed transport is invaluable for VIP escort operations. These transports are frequently selected when operating alone or at the head of a convoy due to their enhanced front armor.

### Cavalry

Sentinels are ubiquitous walkers that have application in fire support, logistics and material handling, and rapid engagement in difficult terrain. Their ease of maintenance, common fuel source, and flexible armament are a credit to their design. Their superior survivability makes them ideal reaction elements when paired with infantry.

### Armor

The Taurox Prime is a more heavily armed and armored version of the Taurox. It is used as an ideal medium hard point, fast enough to perform surprise attacks yet armored enough to weather small arms fire. It loses half of its carrying capacity in order to accommodate its powered weapon turret.

### Artillery

The NASC has in its arsenal both Hydra Anti-Air and Wyvern Infantry Suppression self-propelled artillery. The Hydra is equipped with a Hydra Flak Cannon array while the Wyvern is equipped with a Stormshard Mortar array.

### Engineer

The Engineering Company is a specialist group with four areas of expertise aside from their standard NASC Skills: Mobility, Counter-Mobility, Entrenchment and Sustainment.

Mobility	Improving the ability of NASC to move in their operational area. This includes clearing routes through obstructions, constructing improvements to allow passage, and clearing landing zones.
Counter-Mobility	Creating obstacles that hinder enemy movement in the operational area. This includes laying mines, demolishing bridges and roads, and erection of tank-traps to impede vehicle movement.
Entrenchment	Exploiting terrain to create defensible positions and erecting defensive and logistical structures to improve selected positions.
Sustainment	Conducting logistical trains as requested by battalion Logistics Officers in order to provide supplies of food, ammunition, and manpower.

# Combined Arms Tactics

## Taurox

The Taurox APC is a robust vehicle which holds ten soldiers and specializes in rapid movement over improved and unimproved surfaces. The vehicle's light armored plating, quad tracks, and supercharged engine allow it to go nearly anywhere, hurtling across ruined cities and rubble-strewn wastelands with equal speed.

### Physical Features





The Taurox is crewed by two operators, both NASC Armsmen. One drives the Taurox and one communicates with NASC elements and maintains situational awareness. Typical of light transports, the Taurox is lightly armed, only having a pintle-mounted weapon available on the top hatch. The Taurox has a unibody construction, with the cab and cargo hold of the vehicle forming one contiguous compartment which is environmentally sealed. The Taurox can carry ten passengers in addition to its crew.

### Typical Application

Tauroxes are best used for rapid transport, whether to deliver infantry to exploit developing battlefield conditions or for long-haul logistics trains in non-hostile areas. The lack of integral armaments make this vehicle crucial for operations in friendly civilian areas with delicate political relationships.

## Chimera

The Chimera is the most common infantry transport in the Imperium due to its robust engine and drivetrain, the versatility of its chassis, and the survivability of its armor. It is unsurpassed as a budget infantry assault vehicle.

Chimera Platoon				Turret Weapons	Hull Weapons
Chimera Section A		Chimera Section B			
				Heavy Bolters Multi-Laser Autocannon	Heavy Bolter Heavy Flamer Multi-Melta
<b>Chimera A1</b>	<b>Chimera A2</b>	<b>Chimera B1</b>	<b>Chimera B2</b>		

### Typical Application

Chimera are best used to deliver Infantry troops to operational areas. Their robust armor, heavy armament, environmentally sealed crew compartment, and all-terrain track system makes the Chimera operationally appropriate for diverse battlefield conditions. Imperial doctrine maximizes their abilities by using Chimeras as troop transport for mechanized Infantry supporting heavy armor. The Chimera can carry twelve passengers in addition to its crew.

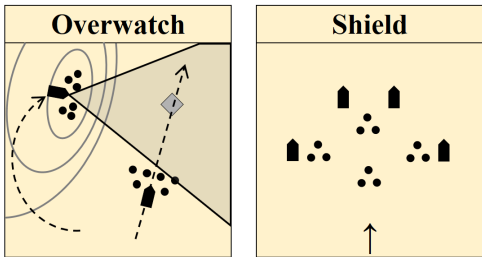
### Signature Maneuvers

#### Overwatch

One Chimera with an infantry squad occupies a defensible position with sight advantage over an objective in order to provide fire support and intel to a second Chimera and infantry element which clears the objective.

#### Shield

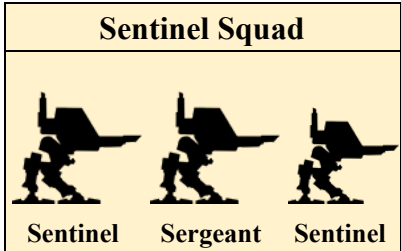
When moving through open terrain with a high expectation of encountering enemy armor or heavy weapons, the Shield maneuver provides cover and concealment to dismounted infantry elements while allowing the infantry to support vehicles with massed fires and flanking maneuvers. Best combined with the Sword maneuver to maximize flexibility and compliment strengths of combined arms forces.



# Combined Arms Tactics

## Sentinel Squads

The Sentinel is a one-man, all-terrain, lightweight, bipedal combat walker. They achieve a perfect balance of robustness and mobility, able to negotiate terrain that would immobilize heavier battle tanks and armored vehicles while still able to face down fire that would shred ranks of infantry. Acting as mobile hard points and weapons platforms, Sentinels deliver surgical firepower in diverse tactical applications.



Short Mission Armaments	
Swarms	Heavy Flamer
Light Infantry	Heavy Bolter
Medium Infantry	Autocannon
Light Vehicles	Multi-Melta
Heavy Vehicles	Lascannon

Long Mission Armaments	
Swarms	N/A
Light Infantry	Multi-Laser
Medium Infantry	Lascannon
Light Vehicles	Lascannon
Heavy Vehicles	N/A

## Armament and Configuration

Sentinels are capable of mounting a diverse host of heavy weaponry in order to meet the needs of different battlefield conditions. For short duration sorties where the squad will have the ability to resupply as needed, niche weaponry with finite ammunition can be used, allowing the squad to address mission-specific needs. On longer duration missions, such as infiltration or reconnaissance, Las technology weapons are favored for their simplified resupply requirements. A lighter can simply drop a disposable promethium blivet in a concealed location for the squad to claim and operations can continue.

A sentinel platform has both Scout and Armored configurations. In Scout configuration, the cab is open and the operator exposed. There is literally no reason for this other than it looks cool. In Armored configuration, the cab is enclosed, armored, and has environmental protection. The same sensor array is available to both configurations.

## Typical Application

Sentinels are most often used for Infantry Fire Support, Armored Column Support, and Scouting. When supporting Infantry, the Sentinels march conspicuously forward of the main element to attract fires and safeguard personnel. During Armor support, Sentinels are best applied as a maneuver element to flank the enemy after the Armor has fixed them in place with suppressive fire. In Scouting operations, the Sentinel will range far ahead of the main force gathering intel, performing hit-and-run harassment, and establishing devastating ambushes to neutralize VIP targets.

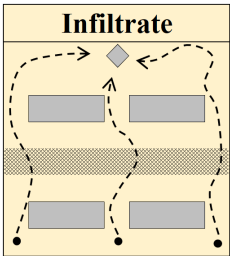
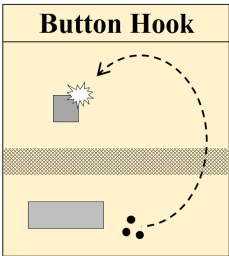
## Signature Maneuvers

### Button Hook

When performing this maneuver, the Sentinel Squad will slip through the battle line to strike the enemy from the side or rear. If successful, this will throw the enemy into disarray and scatter their defenses for the main NASC element to decisively crush.

### Infiltrate





Infiltration represents a diverse catalog of operations in which the Sentinels will evade detection to pass behind enemy lines and accomplish strategic objectives such as fuel depot raids, comms array demolition, and supply line sabotage.



# Combined Arms Tactics

## Armor

Due to the resilience and reliability of the Chimera vehicle chassis, it was used as the basis of multifarious variants that addressed specific combat conditions. Relevant here are the Chimedon and Chimera light tanks which mount a battle cannon and a twin-linked autocannon respectively. The increased stresses from the operation of the larger armament required the use of a structurally reinforced turret ring and a high powered turret actuator. This necessitated the reduction of the passenger capacity from twelve to six and the removal of the lasgun arrays.

Armor Platoon			
Chimedon Section		Chimerax Section	
			
Chimedon 1	Chimedon 2	Chimerax 1	Chimerax 2

Chimedon Weapons
Chimedon Battle Cannon
Hull-Mounted Heavy Bolter
Chimerax Weapons
Chimerax Autocannon
Hull-Mounted Heavy Bolter

## Configuration

Chimera Variant Light Tank							
Name	M	BS	FA	SA	RA	ST	Special
Chimedon	15m	35	30	22	16	35	Transport(6)
Chimerax	15m	35	30	22	16	35	Transport(6)
Weapon	Rng	RoF	Dam	Pen	Clip	Special	
Chimedon Battle Cannon	200m	S/-/-	4d10+2	8	30	Blast(1), Concussive(4)	
Chimerax Autocannon	150m	S/4/-	2d10+10	5	80	Reliable, Twin-Linked	

## Typical Application

Chimedons are excellent for use as a command vehicle in support of infantry for its anti-tank capability. Chimeraxes can be employed much the same, but are better for countering heavy infantry such as Tyranid Warriors.

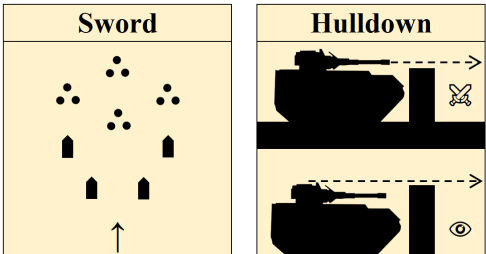
## Signature maneuvers

### Sword

When entering into dense terrain such as a forest or a city, dismounted infantry proceeds ahead of the Armor Platoon. Tight corners and terrain features provide opportunities with anti-tank capabilities to place ambushes or mines. The dismounted infantry ferrets out light resistance and hidden dangers while the armor provides mobile overwatch.

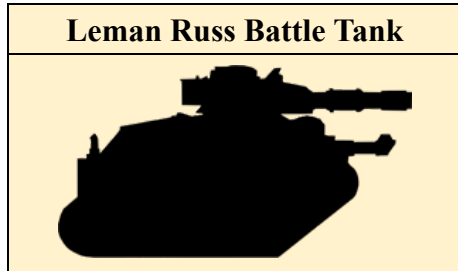
### Hull Down

When armor elements have time to create firing positions, especially with the aid of engineering elements, multistage positions are made. The entrenched firing position should have an observation elevation that conceals the vehicle while allowing battlespace monitoring by the crew and an engagement elevation that allows the vehicle to fire without exposing the hull of the vehicle to enemy fire. Ideally, each vehicle would have two of these entrenched firing positions from which to alternate.



# Combined Arms Tactics

## Leman Russ Battle Tank



Hull Weapon Options
Heavy Bolter Heavy Flamer LasCannon

Sponson Weapon Options
Heavy Bolter Heavy Flamer Lascannon Plasma Cannon

## Configuration

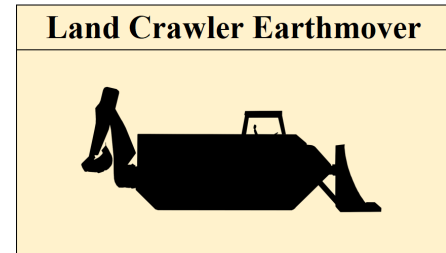
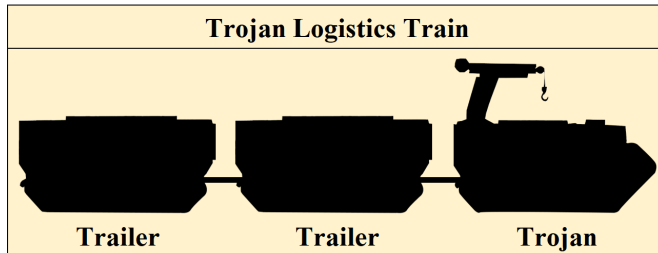
Leman Russ Battle Tank							
Name	M	BS	FA	SA	RA	ST	Special
Leman Russ Battle Tank	12m	35	40	32	20	55	Rugged, Tracked
Weapon	Rng	RoF	Dam	Pen	Clip	Special	
Battle Cannon High Explosive Round	750m	S/-/-	3d10+10	8	1	Blast(10), Concussive(3)	
Battle Cannon Anti-Tank Round	750m	S/-/-	3d10+17	15	1	Accurate, Razor Sharp	
Battle Cannon Canister Round	50m	S/-/-	5d10	4	1	Spray	



# Combined Arms Tactics

## Engineers

Engineers are tasked with various tasks in support of NASC operations from construction, to demolition, to supply. They are enablers and force multipliers, changing the nature of the battlespace to create advantages for the NASC.



## Configuration

The Engineer Company is called upon to perform many diverse tasks for their Brigade, and thus require diverse equipment and vehicles. For earthmoving and construction tasks related to mobility, countermobility, or entrenchment operations, the engineers make use of the Land Crawler Earthmover. One of the most ubiquitous vehicles in the Imperium, the Land Crawler is renowned for its reliability and ease of maintenance. For sustainment operations, the engineers use the Trojan Logistics Supply Vehicle and its available train of trailers. None of these vehicles have armaments.

## Mobility

The engineering tasks that support mobility operations include those that reduce, clear, or mark obstacles (including mines and falling hazards); clear or mark lanes of travel; and build, repair, or maintain roads, bridges, and airfields. These operations enhance the NASC's ability to move around the battlespace and are crucial not only for tactical maneuver, but the safe transit of logistical trains to support remote NASC elements.

## Countermobility

Countermobility operations are those engineering tasks that use or enhance the effects of natural and manmade obstacles to deny enemies freedom of movement and maneuver. The primary purpose of countermobility operations is to slow or divert the enemy, to increase time for target acquisition, and to increase weapon effectiveness. Countermobility operations include the construction of entry control points and other obstacles and traps to deny free access to fixed sites.

## Entrenchment

Entrenchment operations are those engineering activities that develop and construct protective positions, such as earth berms, dug-in firing positions, camouflage and countersurveillance screens, to reduce the effectiveness of enemy weapon systems. They also include construction of logistical facilities in combat outposts such as barracks.

## Sustainment

Engineers are not expected to handle any part of planning or scheduling in regards to logistics operations, but they are responsible for the vehicles and are tasked with operating the vehicles in support of logistics operations.

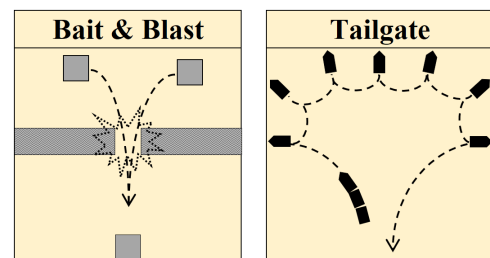
## Signature Maneuvers

### Bait & Blast

A choke point is prepared for demolition through use of a command detonation device, given to an ANSC operational leader.

### Tailgate

A convoy pulls into a coil formation and opens their rear hatches. The Trojan Logistical Train visits each rear hatch in turn, resupplying ammunition, fuel, and other consumibles.



# NASC Wellness Screener

## Housing

- I. Do you sleep in the same place every night?

**If yes**

- A. Does your home have bugs or rats?
- B. Is your home comfortably warm?
- C. Does your home have nearby water for drinking and bathing?
- D. Does your home have space to keep your things?

## Food and Water

- II. How often do you go hungry?
  - A. Briefly describe why you usually go hungry
- III. How often do you go thirsty?
  - A. Briefly describe why you usually go thirsty

## Childcare

- IV. Do you have children?

**If yes**

- A. How many?
- B. Who watches them?
- C. Does lack of childcare prevent you from working?

**If no**

- D. Are you sexually active?
  - 1. Are you trying to have a child?
    - a) Do you know how to have a child?

## Employment and Workplace

- V. Do you work?

**If yes**

- A. Where do you work?
- B. Is your workplace loud?
- C. Is your workplace very hot or cold?
- D. Is your workplace well lit?
- E. Do you work with moving machinery?
- F. Do you work with dangerous chemicals?

**If yes to any B-F**

- 1. How often do people get injured at your workplace?
- 2. What do people do to protect themselves from danger in the workplace?

**If no**

- G. Why not?

## Education

- VI. Can you read?
- VII. Can you write?
- VIII. Can you add and subtract?

## Personal Safety

- IX. How often does someone physically hurt you?
- X. How often does someone insult you or talk down to you?
- XI. How often does someone threaten you with physical harm?
- XII. How often does someone scream or curse at you?